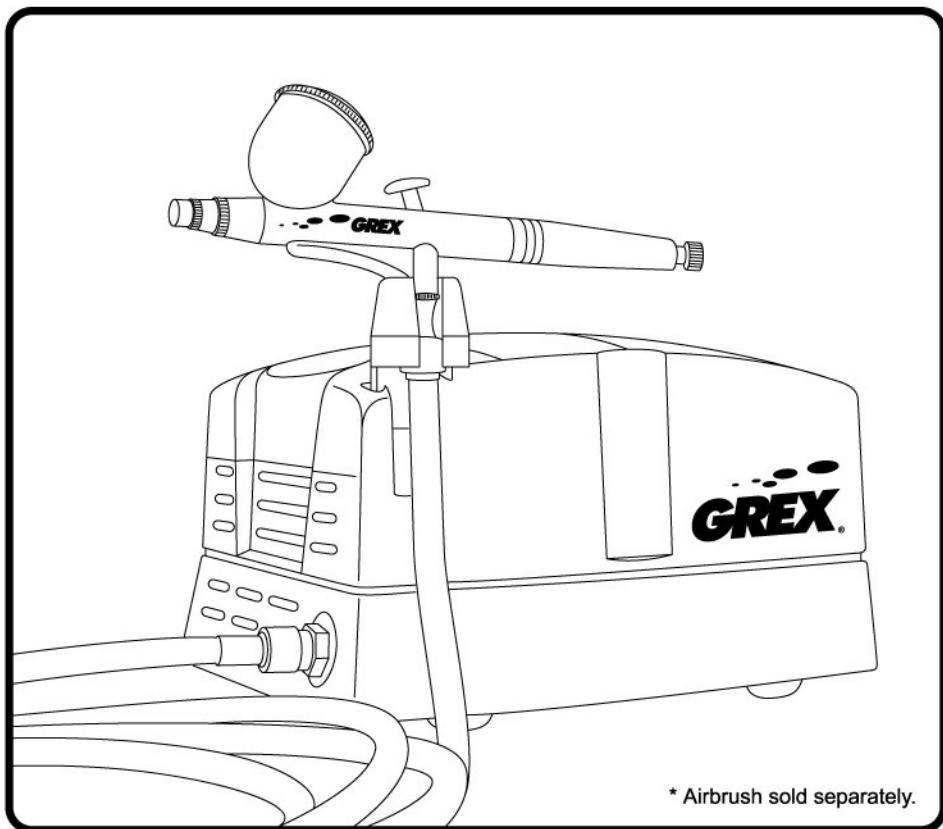


# GREX<sup>®</sup>

## AERIS I

Airbrush Air Compressor



**CAUTION:** Before attempting to use or service this tool, carefully read and understand all rules and instructions for safe operation.



**NOTE:** This manual includes safety warnings, operation instructions, and tips on the maintenance and inspection of this tool.

# 1. SAFETY INSTRUCTIONS



**WARNING:** Do not attempt to operate this air compressor unless you have read and fully understood all instructions and safety precautions contained in this manual. Failure to comply can result in serious injury to yourself and bystanders.

## 1. Always plug air compressor into a properly grounded outlet.

Electrical shock or electrocution may occur if air compressor is not operated properly. Make sure air compressor is plugged into a properly grounded outlet that provides correct voltage & adequate fuse.

## 2. Do not leave air compressor exposed to atmospheric agents.

Never leave air compressor outdoors exposed to the rain, sun, etc. Never operate the air compressor in wet conditions or when its raining.

## 3. Do not soak or immerse air compressor in water or other liquids.

Penetration of water or liquids into the air compressor will damage the electrical components and will result in danger for the safety of the user. Never use compressor with wet or damp hands or bare feet.

## 4. Check power cord for signs of crushing, cutting or heat damage.

Electrical shock may occur from damaged electrical cord. Replace damaged power cord before use.

## 5. Repairs must be done by authorized personnel.

In the event of a fault and/or malfunctioning of the air compressor, disconnect the air compressor from the power supply. Any repairs on the air compressor should be done by an authorized personnel. Contact Grex if you believe your air compressor requires service and/or repair.

## 6. Keep flammable material away from the air compressor.

Always operate air compressor in a well ventilated area free of flammable vapors and combustible materials. Vapors may ignite by normal sparks in the motor and switch and cause serious injury.

## 7. Never place objects against or on top of air compressor.

Operate air compressor at least 12 inches away from any wall or obstruction that would restrict proper ventilation. Serious injury or death may occur if any air compressor ventilation openings are restricted, as it causes compressor to overheat.

## 8. Operate air compressor in a well ventilated area.

Sprayed materials such as paint, paint solvents, paint remover, etc. may contain harmful vapors and poisons. Follow all safety instructions provided with the materials you are spraying. Use of a respirator may be required when working with some materials.

## 9. Always turn off air compressor when not in use.

Do not leave the compressor ON unnecessarily. The compressor is not made to run continuously. The ideal duty cycle is 50-50, with a continuous run time of 3 minutes. Pull the plug from the socket when the air compressor is not in use.

## 10. Never inhale air from the air compressor.

Serious injury or death can occur from inhaling compressed air. The air stream may contain carbon monoxide, toxic vapors or soil particles. Never inhale air from the air compressor either directly or from a breathing device connected to the air compressor.

## 1. SAFETY INSTRUCTIONS (continued)

### 11. Never point the air stream at any part of your body, or anyone else.

Always maintain a safe distance from individuals while operating the air compressor. The compressed air stream can cause soft tissue damage and can propel loose debris at a high speed, causing property damage or personal injury.

### 12. Never leave pressurized air compressor unattended.

### 13. Turn off air compressor before attempting maintenance.

Turn off air compressor and unplug from power supply before performing maintenance. All repairs to the air compressor should be made by an authorized personnel.

### 14. Do not allow children or inexperienced persons to use air compressor without supervision.

### 15. Thermal cut-out will protect the motor against over-heating.

The compressor is fitted with a thermal cut-out to protect the motor against over-heating. The compressor should restart automatically after a few minutes once it has cooled sufficiently.

### 16. Do not use for unintended purposes.

This appliance is intended only for use and purpose as an airbrush compressor. Any other use has to be considered improper and potentially dangerous.

### 17. Use only parts and accessories supplied or recommended by Grex.

Unauthorized parts or accessories may void your warranty and can lead to malfunction, resulting in injuries. Do not modify the air compressor without written approval from Grex.

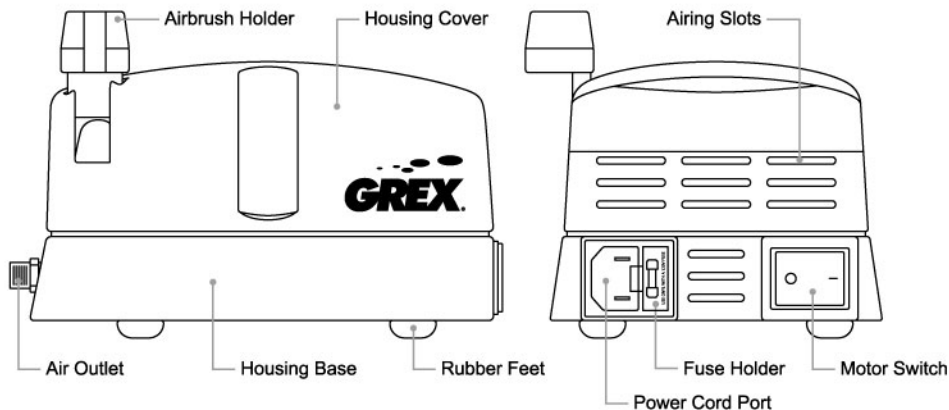
## 2. TECHNICAL SPECIFICATIONS

Electrical Power	110V / 1.5A / 60Hz (AE1-A) or 230V / 0.5A / 50Hz (AE1-B)
Speed	2600 rpm
Maximum Pressure	2 bar (29 psi)
Displacement	15 L/min (0.53 cfm)
Net weight	1.3 kgs (2.9 lbs.)
Dimensions	190L x 125W x 95H mm (7.5"L x 4.9"W x 3.7"H)
Noise level	58 dB
Air outlet	1/8" NPS male fitting
Safety Fuse	F2.5A

## 3. SUGGESTED APPLICATIONS

Hobby, model building, arts and crafts, nail art, beauty makeup, photo retouching, illustration & fine art.

## 4. COMPRESSOR ANATOMY



## 5. GETTING STARTED & OPERATION



**WARNING:** Do not attempt to operate this air compressor unless you have read and fully understood all instructions and safety precautions contained in this manual. Failure to comply can result in serious injury to yourself and bystanders.

1. Always keep this manual accessible for reference.
2. This compressor does not require any lubrication.
3. Place air compressor in a clean, dry, and well-ventilated area. Air compressor should be placed on a firm, level surface and be at least 12 to 18 inches away from walls or obstacles that may prevent proper ventilation. Make sure the airing slots are unobstructed and free of dirt and debris
4. Make sure air compressor is unplugged from electrical outlet and the switch is turned OFF (O).
5. Check that the air compressor is not visibly damaged. If there is any doubt, do not use it. Call Grex customer service for instructions on service and repairs.
6. Before connecting the air compressor to an electrical outlet. Make sure the power rating of the air compressor matches the supply from your outlet.
7. Connect the appropriate end of the power cord to the air compressor and plug the other end to a properly grounded electrical outlet.
8. Switch the air compressor ON (-). The air compressor should begin to pump and air should be coming out from the air outlet. If the air compressor does not start, consult the Troubleshooting Guide on page 6.
9. Turn the air compressor OFF (O).
10. Securely attach air hose to the air compressor. Connect your airbrush to the air hose.
11. Turn the air compressor ON (-). Your air compressor is ready for use.

## 6. MAINTENANCE



**WARNING:** Before performing any maintenance and/or inspection of air compressor, always first turn off the air compressor, disconnect the power cord from the power supply and wait for the air compressor to cool down.

### CLEANING

**DANGER:** Never use gasoline or other flammable liquids to clean the air compressor. Vapors may ignite by a spark and cause the air compressor to explode and result in death or serious injury.

Keeping the air compressor clean is essential to maintaining safe and optimal operation. Make sure all airing slots are free of dirt and debris. Not doing so will result in overheating of the air compressor which can potentially damage the unit and cause injury to the user.

Before attempting to clean air compressor, make sure power cord is disconnected. Use non-flammable cleaning solutions to wipe exterior of air compressor clean with a damp sponge or cloth. **NEVER** put the air compressor under running water or liquids. **NEVER** soak it in water or liquids. Penetration of water or liquids into the air compressor will damage the electrical components and will result in danger for the safety of the user.

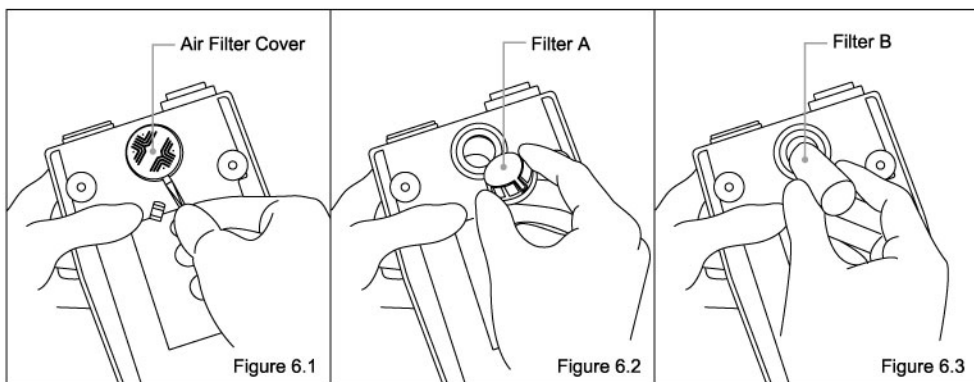
**CAUTION:** Dry off air compressor completely before use

### REPLACEMENT PARTS

To purchase replacement parts, contact your local Grex dealer. Find your local Grex dealer by visiting [www.grexairbrush.com](http://www.grexairbrush.com), emailing [info@grexairbrush.com](mailto:info@grexairbrush.com), or calling 888-4-GREXCO (447-3926).

### AIR FILTER

The air filter is located at the intake port of the air compressor and prevents excess dust, dirt and debris from flowing through the compressor. It's essential to keep the air filter clean for optimal and safe operation. Access the air filter on the bottom of the air compressor by removing the air filter cap with a small flat head screwdriver (Figure 6.1). Remove filters A (Figure 6.2) and B (Figure 6.3). Either clean the air filters with soapy water or replace the air filters depending on their condition.



## 6. MAINTENANCE (continued)

### FUSE REPLACEMENT

If the air compressor does not start or run because of a blown fuse, first disconnect the air compressor from the power supply. The fuse is located near the power cord port on the air compressor and can be accessed by removing the fuse holder with a small flat head screwdriver (Figure 6.4). Replace the fuse in the fuse holder (Figure 6.5) and then re-install the fuse holder into the air compressor.

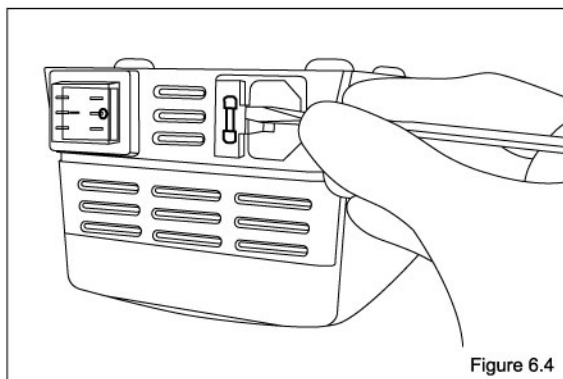


Figure 6.4

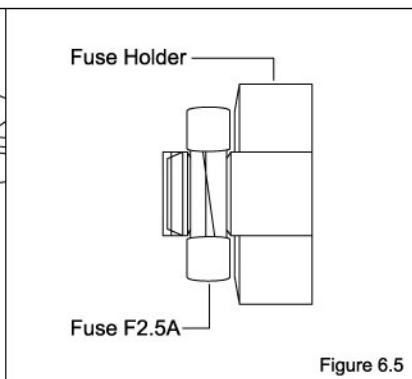


Figure 6.5

## 7. HANDLING AND STORAGE CONDITIONS

**Ambient Temperature:** -20°C to +40°C (-4°F to 104°F)

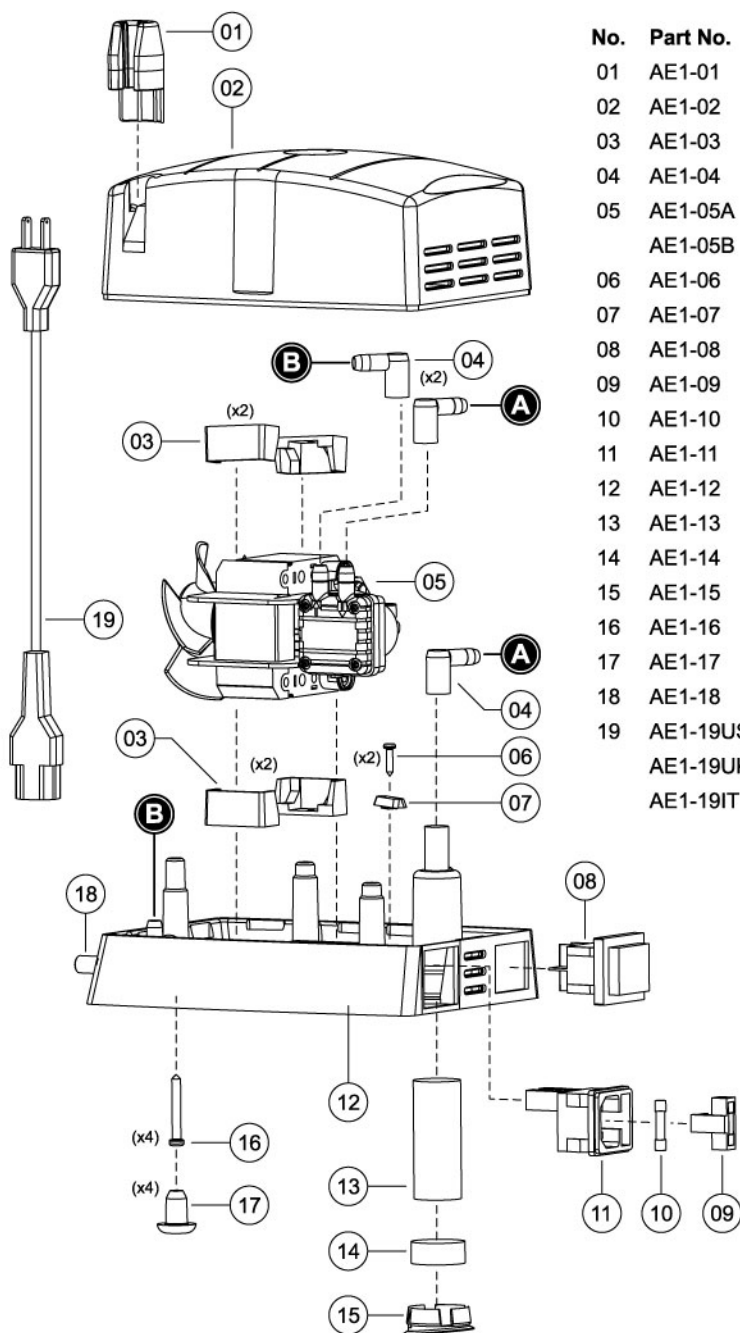
**Atmospheric Pressure:** 700 to 1060 hPA (10 to 15 psi)

**Humidity:** 30 to 95%

## 8. TROUBLESHOOTING GUIDE

Problem	Possible Cause	Remedy
Compressor will not start or run	<ul style="list-style-type: none"><li>Loose electrical connections.</li><li>Switch in the OFF position.</li><li>Fuse has blown.</li><li>Thermal cut-off has intervened.</li><li>Defective motor or switch.</li></ul>	<ul style="list-style-type: none"><li>Check plug and wire connections.</li><li>Turn switch to ON position.</li><li>Replace fuse with proper specs.</li><li>Clean airing slots. Allow to cool.</li><li>Contact Grex customer service.</li></ul>
Abnormally noisy operation	<ul style="list-style-type: none"><li>Bearing, piston or connect rod failure.</li></ul>	<ul style="list-style-type: none"><li>Contact Grex customer service.</li></ul>
Air leaks at fittings	<ul style="list-style-type: none"><li>Fittings are not tight enough.</li></ul>	<ul style="list-style-type: none"><li>Tighten fittings where air can be heard escaping. Check fittings with soapy water. Do not over tighten. Teflon tape may help.</li></ul>

## 9. EXPLODED DIAGRAM & PARTS LIST



No.	Part No.	Description
01	AE1-01	Airbrush holder
02	AE1-02	Housing cover
03	AE1-03	Rubber motor guards
04	AE1-04	Air tube fittings
05	AE1-05A	Compressor (110V)
	AE1-05B	Compressor (230V)
06	AE1-06	Screw
07	AE1-07	Wire stay
08	AE1-08	On/Off switch
09	AE1-09	Fuse holder
10	AE1-10	Fuse 2.5A
11	AE1-11	Power cord port
12	AE1-12	Housing base
13	AE1-13	Filter B
14	AE1-14	Filter A
15	AE1-15	Air filter cap
16	AE1-16	Screw
17	AE1-17	Rubber feet
18	AE1-18	1/8" NPS male fitting
19	AE1-19US	Power cord (US)
	AE1-19UK	Power cord (UK)
	AE1-19IT	Power cord (ITA)

## **GreX Airbrush One Year Limited Warranty**

All GreX air compressors are warranted against manufacturing defects of material or workmanship for a period of ONE year from the original date of purchase. This warranty does not cover normal wear parts that need to be replaced occasionally such as air filters, gaskets, seals and o-rings. Any parts of the product covered under this warranty will be repaired or replaced at our option, which after examination proves to be defective in workmanship of material during the warranty period. Proof of purchase may be required.

This warranty does not apply to repair or replacement parts required due to misuse, abuse, normal wear and tear or repairs and alterations attempted. In no event shall GreX be liable for any indirect, incidental, or consequential damage from the sales or use of this product. This disclaimer applies both during and after the term of this warranty.

This is the only warranty and our company makes no warranties express or implied, including merchantability and fitness for a practical purpose, after the ONE year term of this warranty. This limited warranty gives you specific rights and you may have other rights, which vary from state to state.

---

All information, text and images contained in this publication are the property of GreX Airbrush. Unauthorized distribution, duplication, appropriation or reproduction in whole or in part is strictly prohibited.

---

© 2011 GreX Airbrush. All Rights Reserved.



705 South Electric Avenue, Alhambra, CA 91803  
Tel. 626-289-7618 Fax. 626-289-8121  
[www.greXairbrush.com](http://www.greXairbrush.com)